



Tony Ameneiro, *Lily Head*  
Mezzotint with hand colouring, 2008

**GRAG**  
**PROGRAM**  
**January - June 2010**

**GOULBURN REGIONAL ART GALLERY**

Until– 29 January 10

**WALTER BRECELY**  
Strange Semantics

3D winner of the 2008 Goulburn Art Award

**MAXINE GREEN**  
Hyper Vigilance

2D winner of the 2008 Goulburn Art Award



Walter Brecely, *Re-growth*, 2009, spoons, forks, brass,  
80 X 80 X 60mm



Until 29 January

# **GRAG PERMANENT COLLECTION-** Skeletons in the Collection

Skeletons in the Collection is this year's annual exhibition of works in the permanent collection of Goulburn Regional Art Gallery. GRAG is unlocking the vault door and bringing out works- some of which have never been exhibited- but all have been chosen to fit in with the theme of 'skeletons in the closet', figuratively and literally. Contemporary works by artists including Tony Ameneiro, Ben Quilty and Steven Holland will be on display with GRAG's mysterious 'ancestor paintings' – whose ancestors are they and will they ever reveal their secrets?



Ben Quilty, *Skull Rorschach*  
Oil rorschach on linen, 2009, 60 x 100mm diptych

18 January - 6 March

## **SCULPTURED RECYCLABLES**

Caroline Chisholm Courtyard

Dave Ball • Karen Edin • Catherine Falk •  
Steven Holland • Tracy Luff  
• Andrew Townsend

### **Saturday 6 February Opening at 2pm**

This innovative exhibition deals with Waste and recycled materials- the stuff we usually chuck out. 6 regional artists were asked to make works using only recycled materials. You can check out this show anytime you feel like as works will be exhibited in the gallery courtyard which is open 24/7.

Hands on workshops will be conducted throughout February with the artists and regional high school students.

Held in response to the Veolia C3 West MCA project on Waste with Dutch artist Jeanne van Heeswijk.





Andrew Townsend, *Subtle Reign*, 2009  
Paper, mapping and steel, 95 x 310 x 12cm

2 – 23 February

## **TIMBER CREATIONS**

an exhibition of works by the members of the  
Goulburn Region Woodworkers Inc

### **Saturday 6 February Opening at 2pm**

by Chris Clark, Editor, Australian Woodsmith  
Magazine

### **Floor Talk Thursday 11 February 12.30pm**

by Kevin Dwyer, co-Patron Goulburn Region  
Woodworkers inc

**Exhibition will be open Sat/Sun 1 – 4 pm**





Gordon Longstaff, *Mah-Jong Box*  
2009 Tasmanian Myrtle,  
Camphour Laurel & Hoop Pine, 180 x 230 x 190mm

2 – 23 February

## **E.C. MANFRED, 19th century Goulburn Architect & Surveyor .. a glimpse**

A rare opportunity to view original architectural documents - building elevations and floor plans, specifications and contracts – covering the period 1880 - 1892. Most of the Folios in this Exhibition were lost in the late 1950s and found by chance in 2008. Edmund Cooper Manfred (1856 – 1941) was Goulburn's finest architect, designing many of the city's civic, commercial and residential buildings. In addition, he was commissioned to design rural residences, shops and churches throughout the Southern Tablelands. Being well designed and constructed, a great many of these buildings survive for us to enjoy.

## **TINA MILSON MANFRED: through my lens**

Exhibition of photographs of Manfred buildings by local photographer Tina Milson

### **Saturday 6 February Opening at 2pm**

by Megan Martin, Head, Caroline Simpson Library & Research Collection Historic Houses Trust of NSW

**Floor Talk Tuesday 9 February 12.30pm by** David Penalver , Architect & founding member of the Goulburn Heritage Group.



Front elevation of *King's College*, Cowper/Combermere Streets, Goulburn.

The building was commissioned in 1889 by Andrew Finlay to suit the requirements of his son-in-law Edgar Kelso for a residential College for young gentlemen.



Tina Milson, *Masonic Temple*, 1980 – 1928 Bourke Street Goulburn, Photograph 2009

2 – 23 February

## **INKSPIRATION**

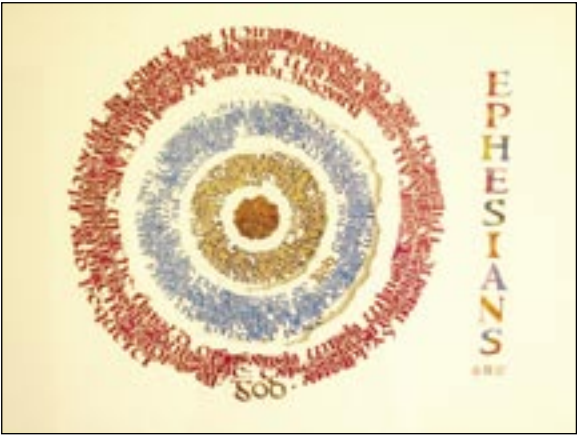
Space 2

Exhibition of calligraphy works by students of regional calligraphy teacher Alison Lawrence

**Saturday 6 February Opening at 2pm**

**Tuesday 9 February 10am**

Demonstration by Alison Lawrence for pre-schoolers & toddlers and interested parents-free/  
all welcome



Alison Walker, *Ephesians One*, 2009

27 February – 10 April

Joseph Banks  
and the *Flora*  
of the Australian  
east coast

**Saturday 27 February 1 – 4pm**

Opening forum with Dr James Broadbent,  
Catherine Lewis & Michael Bligh.

Tickets \$20 RSVP 48 234 494

AUSTRALIAN NATIONAL MARITIME MUSEUM TRAVELLING EXHIBITION



**Museums  
& Galleries  
NSW**



**Communities  
arts nsw**

Joseph Banks: a Regional Response Exhibition is funded throughout the M&G NSW Incoming Touring Exhibition Grant program. The Incoming Touring Exhibition Grant program and M&G NSW are assisted by the NSW Government through Arts NSW



*Banksia serrata*

Artist John Federick Miller

© Natural History Museum, London

ANMM Collection Gift from Dr and Mrs E Schiller

27 February – 10 April

## **JOSEPH BANKS: a regional response**

Tony Ameneiro • Janie Bligh • GW Bot  
• Betty Bray • Dimity Kidston  
• Robyn Mayo • Max Miller • JW Pratt

Exhibition of works by 8 local and regional artists in a contemporary response to Joseph Banks and the flora of the Australian east coast

### **Saturday 27 February 1 – 4pm**

Opening forum with Dr James Broadbent,  
Catherine Lewis & Michael Bligh  
Tickets \$20 RSVP 48 234 494

### **Floor Talk Thursday 4 March 12.30pm**

by Tony Ameneiro

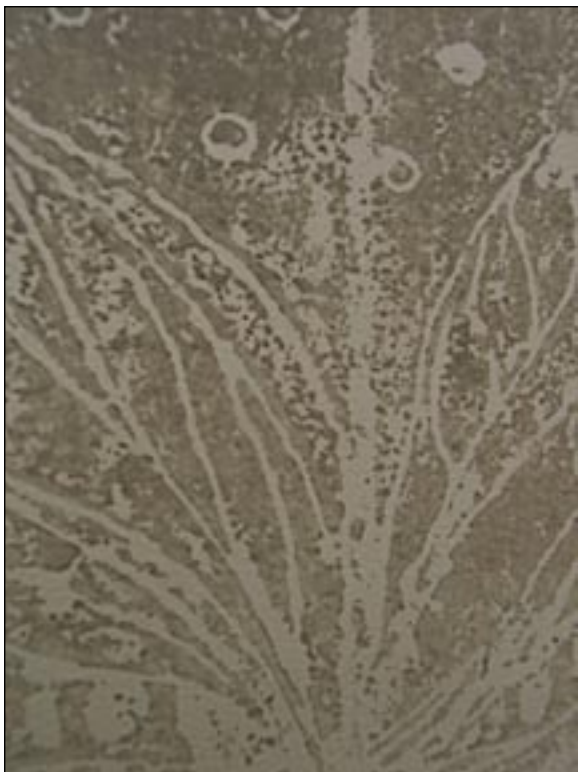
**Museums  
& Galleries  
NSW**



**Communities  
arts nsw**

Joseph Banks: a Regional Response Exhibition is funded through the M&G NSW Incoming Touring Exhibition Grant program. The Incoming Touring Exhibition Grant program and MG NSW are assisted by the NSW Government through Arts NSW.





Betty Bray, *Organic Form*, Unique state print, detail 2009  
250cm x 230cm

13 – 24 April

## GOULBURN ART AWARD

An annual GRAG event featuring 2D, 3D & Photography by regional artists.

The 2010 Goulburn Art Award will showcase one entry per artist living within a 100km radius of Goulburn. Three categories: 2D, 3D & Photography. A winner from each category is awarded an exhibition in Space 2 at GRAG in 2011.

Entry Forms online: follow links to Gallery  
[www.goulburn.nsw.gov.au](http://www.goulburn.nsw.gov.au)

**Wednesday 14 April Opening at 5.30pm**



Gayle Stockley, *Scorched*, 2009 Wood, wool & pigment



Tina Milson, *Chain of help*, 2009, Photography



Fiona Hammond, *Nature's treasures*, 2009  
Bead embellished neckpiece (stitched onto fabric)

13 April - 29 May

## **TALKING TRASH - Personal relationships with waste**

Dutch artist Jeanne van Heeswijk presents a new work made in collaboration with Paul Sixta and the community of Goulburn in 2009. Jeanne's project looks at the different ways people try to end their relationship with wasting; drawn from 25 personal stories from Goulburn households, a central idea or action is transformed into a short, twominute video fiction. The exhibition presents these videos alongside an installation of personal objects and a series of illustrated postcards.

### **Wednesday 14 April Opening at 6pm**

This project has been supported by Veolia Environmental Services and the C3West Project.



Jeanne van Heeswijk, *Kevin*, 2009  
Digital photograph, copyright and courtesy of the artist

C3West Partners



PP&VA

CASULA  
POWERHOUSE



C3West Supporters



Project Partner



*C3West is an initiative of the Museum of Contemporary Art, Sydney; Penrith Performing & Visual Arts; Casula Powerhouse and Campbelltown Arts Centre. C3West is supported by the NSW Government through ARTS NSW and by the Australia Council, the Australian Government's arts funding and advisory body, through its Community Partnership Section.*

26 April – 29 May

# designTECH

DesignTECH is a showcase of outstanding Major Design Projects from Higher School Certificate Design and Technology students. This annual exhibition, run by the Board of Studies NSW in association with the Department of Education and Training, features an eclectic range of projects demonstrating students' creativity, innovation and successful implementation of original ideas.



## **Thursday 29 April Opening at 6pm**

by a representative from the Department of Education & Training

## **Thursday 6 May Seminar Floor Talk**

Please contact the Gallery on 4823 4494 for further information



Maggie Chiang, *Luzism*  
2009 Cheltenham Girls High School.

26 April – 29 May



Each year women of the South Coast, Emerald Coast, Southern Highlands & Goulburn Mulwaree enter a diverse and unique array of artworks inspired by the historic South Coast house Meroogal, the four generations of women who lived there, its rich collection and a changing theme. The theme for 2009 is:

Books and the world of ideas

**Thursday 29 April Opening at 6pm**

Supported by



HISTORIC HOUSES TRUST







Photograph © John Storey

June 5 - July 11

## The Archibald Prize .10

See this blockbuster exhibition in the comfort of the Goulburn Regional Art Gallery with lots of free parking & cafes nearby.

### **Saturday June 5 Opening Cocktail Party**

Members & Friends \$50

### **Monday 7 June 5pm**

Teachers preview - wine and food with exhibition talk, education resources with Head of Public Programs Brian Ladd, AGNSW. Bookings essential \$15

### **Tuesday 8 June 10am**

Volunteer guide workshop with Brian Ladd, Head of Public Programs, AGNSW (free)

### **Tuesday 8 June 11am**

Floor Talk by Brian Ladd, Head of Public Programs AGNSW (free) All welcome

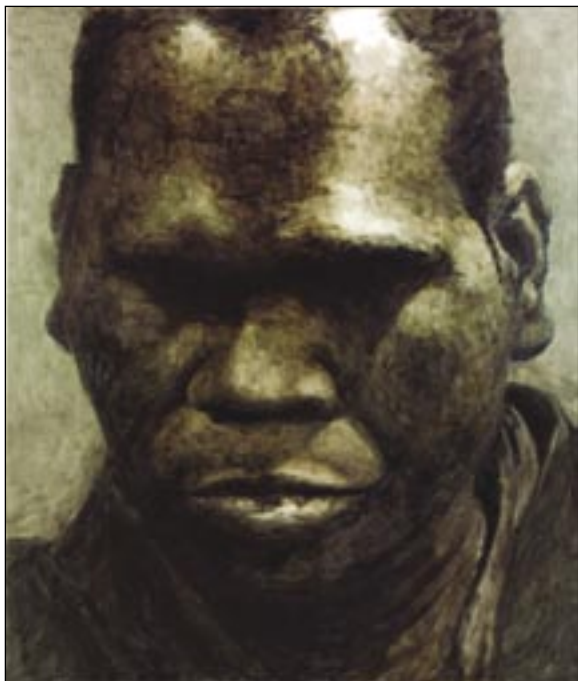
Artists' talks held throughout the exhibition.

Please contact gallery 48234494 for bookings

Exhibition will also be open on Sundays and Public Holidays 1 – 4pm



An Art Gallery of NSW exhibition toured by Museums and Galleries NSW.



Guy Maestri

*Geoffrey Gurrumul Yunupingu*

Image courtesy Art Gallery NSW

Photographers: Carley Wright & Johan Palsson

# **GRAG Public Programs Jan – June 2010**

## **Floor Talks/Forums/Events:**

### **Tuesday 9 February 10.00 am**

Free demonstration by Alison Lawrence for pre-schoolers & toddlers and interested parents

### **Tuesday 9 February 12.30**

E.C Manfred

Floor talk by David Penalver

### **Thursday 11 February 12.30**

Timber Creations

Floor talk by Kevin Dwyer, co-Patron Goulburn Regional Woodworkers Inc

### **Saturday 27 February 1 – 4**

Joseph Banks and the flora of the Australian east coast. Opening Forum with Dr James Broadbent, Catherine Lewis & Michael Bligh

Tickets \$20 RSVP 48 234 494

### **Thursday 6 May Time to be confirmed**

designTECH. Seminar/Floor talk

### **Monday 7 June 5pm**

Teachers preview-wine and food with exhibition talk, education resources with Head of Public Programs, Brian Ladd AGNSW. Bookings essential \$15

### **Tuesday 8 June 10am**

Volunteer guide workshop with Brian Ladd, Head of Public Programs AGNSW (free)

### **Tuesday 8 June 11am**

Floor Talk by Brian Ladd, Head of Public Programs AGNSW (free) All welcome

### **Artists' talks held throughout the exhibition.**

Please contact gallery 48234494 for bookings

## **Workshops**

School Holiday and After School Art Classes are conducted on a regular basis for children aged 4 – 18 by visiting Regional artists and craftspeople in a variety of disciplines. For further information contact Gallery on 48 234 442.

## **CREATIVE EDUCATION**

GRAG offers creative and skills based education programs for primary and secondary school students, including home schooled students and TAFE.

These are designed to give students opportunities for artistic expression and learning experiences which relate to the school syllabus. They compliment exhibitions in the Gallery. Teachers are also invited to take part in professional development days. Eg during the Archibald Prize .10. GRAG also offers an outreach program for rural and isolated schools and weekly workshops for people with disabilities.

### **Teachers' information and program outline**

All primary, secondary and TAFE teachers are invited to preview our 2010 program of exhibitions and public programs on Thursday 4 February at 4.30pm. We welcome all visual art, industrial art, English, history, ESL teachers and teachers interested in the arts in general to attend this informative get together. Our education officer will give an outline of what the gallery can offer your school or TAFE in the way of tailored floor talks for your group and inform you about the educational resources that the Goulburn Regional Art Gallery can offer you as a teacher. In addition, all schools and TAFES are welcome at any time during an exhibition and can request a floor talk prior to their visit. P: 48234442

## FRIENDS OF THE GALLERY

Being a Friend is a great way to stay in touch with what is happening in the art world; meet new like minded friends and share your skills and expertise or learn new skills and expertise. As a member you will receive minutes of the FOG meetings, a 10% discount in our Gallery Shop and to all paid events held at the gallery. Membership is \$20 per year.

## VOLUNTEERS

GRAG welcomes Volunteers to assist with general administrative duties, guiding visitors, opening events etc. OH & S Training is provided. Please telephone the Gallery on 48 234494 or call in and see us.

## GALLERY SHOP

The Gallery shop stocks a variety of cards and beautiful objects by regional artists. For special gifts we have handcrafted jewellery, ceramics and books.

## RESOURCE LIBRARY

Goulburn Regional Art Gallery is an educational resource for the whole community. Consult our collection of books, magazines, reviews, biographies about practising artists, invitations and catalogues on specific artists, artworks and exhibitions you are interested in.

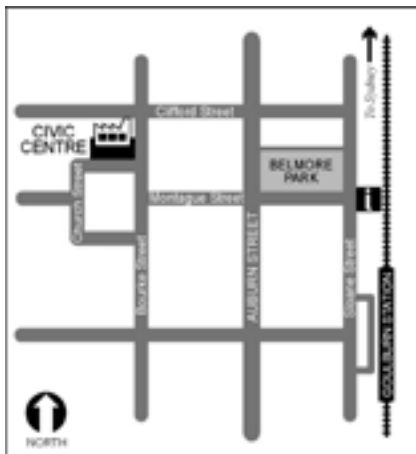
**GRAG is looking for the support of far sighted business'; individuals and companies in the region.** To find out how you can support YOUR local regional gallery, please contact Jane Cush on 4823443 or email [artgallery@goulburn.nsw.gov.au](mailto:artgallery@goulburn.nsw.gov.au). All donations will be acknowledged at your discretion.

# C=onnection=s

Goulburn Regional Art Gallery is pleased to work alongside the following organisations:

Accessible Arts  
Australian Blues Music Festival  
Australian Hot Rod Nationals  
Bourke Street Primary School  
CWA, Exeter & Breast Cancer Awareness  
Crescent School  
Crookwell Art Society  
Essential Personnel weekly workshops  
Goulburn & District Arts & Crafts Inc T/As Gallery on Track  
Goulburn Historic Waterworks Museum  
Goulburn Multicultural Festival 2010  
Goulburn Multicultural Group (GMC)  
Goulburn Mulwaree Council  
Goulburn PCYC  
Goulburn Regional Conservatorium  
IMB Community Foundation  
Kenmore Hospital Museum  
Lieder Theatre  
Mulwaree Arts  
Mulwaree High School  
Regional primary & high schools  
Riversdale (Historic Houses Trust)  
SDN Children's Services Inc Lady McKell Child & Family Learning Centre  
Soroptimist Club  
Southern Tablelands Early Learning & Support Program weekly workshops  
STARTS-Southern Tableland Arts  
TAFE NSW - Illawarra Institute (Moss Vale & Goulburn campus')  
U3A





# GR AG

Goulburn Civic Centre  
Cnr Bourke & Church Sts Goulburn

Open: Mon-Fri 10 – 5 Sat 1- 4

Closed Public Holidays

Ph: 02 48 234 494

Email: [artgallery@goulburn.nsw.gov.au](mailto:artgallery@goulburn.nsw.gov.au) [www.goulburn.nsw.gov.au](http://www.goulburn.nsw.gov.au)

**FREE ENTRY**



Communities  
arts nsw



Goulburn Regional Art Gallery is supported by  
Goulburn Mulwaree Council and by the NSW  
Government through Arts NSW