

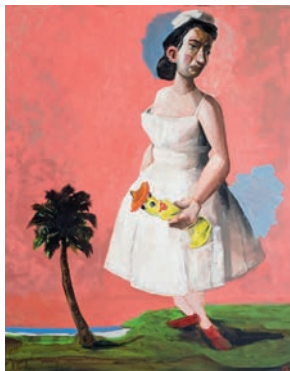


WHAT'S IN THE TOYBOX

27 November - 24 December 2015

An exhibition of works particularly for children but also suitable for adults in need of a little nostalgia in the lead up to Christmas. From original book illustrations to colourful sculptures and including hand-made wooden toys by local Goulburn Woodworkers, there's something to delight everybody in the toybox.

Image: Gordon Fitchett, *The Little Princess*, 2009, Colour pencil on Arches paper, 73cm x 91cm



WORKS FROM THE COLLECTION

27 November - 24 December 2015

Works from goulburn.art REGIONAL GALLERY's Permanent Collection including recent and unseen acquisitions and works on loan to the gallery from private collectors. A varied mix of paintings, prints and sculptures from well-known artists including Ben Quilty, Reg Mombassa and Maclean Edwards.

Image: McLean Edwards, *Oasis*, Oil on canvas, 2008, 153, 122cm. goulburn.art REGIONAL GALLERY's permanent collection. Donated through the Australian Government's Cultural Gifts Program

WHAT WE DO @ THE GALLERY

CREATIVE EDUCATION FOR CHILDREN

- **goulburn.art** REGIONAL GALLERY offers creative and skills based education programs for pre-school, primary and secondary school students.
- **Student groups** are welcome at any time during an exhibition for a free guided tour. Teachers are invited to preview our exhibition program at the beginning of each school semester and arrange a guided tour/talk.
- **Walk, Listen, Imagine, CREATE FREE** Art Program for under 5's Mondays' during school term 11-11.45am. Each session is structured based on a core concept explored in the exhibition. The program includes a short walk and talk through the Gallery with a focus on 1-3 works, a structured story time, concluding with 1 or 2 art and craft activities.

- **Children's Activity Room** is part of the Gallery's creative education program, a space dedicated to children where they can create artworks based on the current exhibition.

- **Outreach program** is run by the Gallery in conjunction with Schools As Community Centres. Playgroup Outreach is held weekly at Goulburn Public, East Goulburn, Windellama, Tallong, Taralga, Dalton, Marulan and Turrumbidgee.

- **After School Art Classes** The Gallery provides two after school programs, one for primary and one for high school aged children. As a part of these programs, students will be encouraged to: view, discuss and respond to present exhibitions, discover a variety of techniques and materials and explore their creativity.

FOR ADULTS

- **Floor talks** and artist talks are run in conjunction with most exhibitions.
- **Masterclasses** are run with select exhibitions.
- **Workshops** by visiting artists and craftspeople run on a regular basis throughout the year.

SNAPSHOT EXHIBITION

An opportunity for regional artists to showcase their work in the Gallery Foyer Space. www.grag.com.au for details.

GALLERY SHOP

Looking for a special gift or card? The Gallery shop stocks a variety of cards and beautiful objects by regional artists.

GALLERY FRIENDS

Being a Friend is a great way to stay in touch with what is happening in the art world; meet new like-minded friends and share your skills and expertise, or learn new ones. Membership \$20 per year and receive 10% off paid programs and shop purchases, and preferential invitations to events.

Volunteers

The Gallery values Volunteers and assistance with general administrative duties. Council approved WHS training given. Please register your interest on 4823 4494 or visit our website for more information

Support Us

goulburn.art REGIONAL GALLERY welcomes either in-kind or financial support from businesses, individuals and companies in the region. Please get in touch if you would like to support the arts in Goulburn.

goulburn.art
REGIONAL GALLERY



VISIONS OF PLEASURE 8

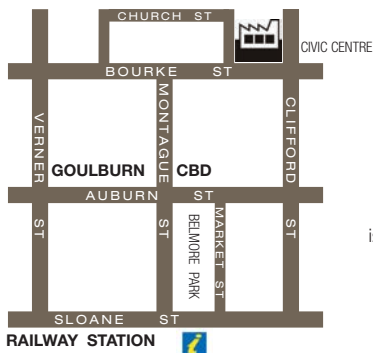
27 November - 24 December 2015

Celebrating International Day of People with a Disability

goulburn.art REGIONAL GALLERY

Goulburn Civic Centre, Cnr Bourke & Church Sts Goulburn
Open Mon-Fri 10-5 Sat 1-4 Closed Sunday & Public Holidays
Phone: 02 4823 4494 Email: artgallery@goulburn.nsw.gov.au www.grag.com.au

FREE ENTRY Sculpture Courtyard open 7 days



goulburn.art REGIONAL GALLERY is supported by Goulburn Mulwaree Council and assisted by the NSW Government through ArtsNSW



July - December 2015
EXHIBITION PROGRAM



THE DAYLIGHT MOON
Rosalie Gascoigne and Lake George

Until 22 August 2015 CURATED BY GLENN BARKLEY

*How can I show you the land I walk?
 You, who stands on pavements,
 Have never seen the wide place I know*

Between Goulburn and Canberra lies the spectacular landscape at Lake George where the colour of the land shifts and flickers under a big dramatic sky. Full of drama and air this landscape was of particular visual and symbolic interest to Canberra bases artist Rosalie Gascoigne. Lake George looms large in the artist's inner imaginings and her formal sensibility was partly honed through driving through the landscape on the search for materials – "Driving in the country was drawing for her...."

Lake George was a place she often came back to as subject and it appears with regularity throughout her oeuvre from the early *Feathered Fence* and *Pale Landscape* through to later panel works where the imagery and components are stripped down to geometric, worn fields of tonal grays, whites and silver as if lit by the "daylight moon", mentioned by poet

David Campbell and like the landscape too, her work has a spare intense sincerity. The *Daylight Moon* is to be exhibited at goulburn.art REGIONAL GALLERY and will focus exclusively on the body of work made in response to Lake George and surrounds, highlighting the artist's close links to this space; its agricultural history and the elements of deep time, weather and geography that shape both the land and the artist sensibility.

Image: *Plain View 2* 1994, timber and Masonite, 101.5 x 83.5 cm. Private Collection, Sydney. Image courtesy the artist's estate and Roslyn Oxley9 Gallery, Sydney © Rosalie Gascoigne's Estate/ licensed by Viscopy, 2015

Front cover Image: *Piece to Walk Around*, 1981, saffron thistle sticks. Museum of Contemporary Art Australia, donated through the Australian Government's Cultural Gifts Program by the Gascoigne Family, 2011. Image courtesy the Museum of Contemporary Art Australia and the estate of the artist. © Rosalie Gascoigne. Licensed by Viscopy 2015.



FREEDOM LIES WITHIN

Until 22 August 2015
 CURATED BY SHARI LETT

In acknowledgement of NAIDOC week, this exhibition curated by Shari Lett, a mentee in the Aboriginal Emerging Leadership Program will showcase works by contemporary Aboriginal artists both previously and currently incarcerated in New South Wales Correctional Facilities.

Image: Dave Nolan, *Goulburn Wings*, 2012, Milk cartons and adhesive



BAKER'S DOZEN

28 August - 26 September 2015

Why is a Baker's Dozen 13? So you'll always have your fair share and that's what you'll be served with this exhibition of works by 13 artists from the Goulburn, Canberra and Southern Highlands regions. Each artist will present a body of work showcasing their preferred medium.

Judy Benjamin, Betty Bray, Barry Canham, Elizabeth Charles, Peter De Lorenzo, James King, John Lascelles, Judy Mylonas, Kirstie Rea, Mark Sadler, Nick Stranks, Catherine Ward, Elizabeth Young.

Image: Peter De Lorenzo, *Polychrome in Blood Orange and Yellow*, 2015, Acrylic on canvas, 123 x 138cm

CERAMICISTS OF THE REGION

Until 22 August 2015

A foyer exhibition of ceramic artists living in or from the region: Elizabeth Charles, Janna Ferris, Bev Hogg, Kate McKay, Rachael Roxburgh and Mark Sadler. In association with Stepping Up The Australian Ceramics Triennale

ELAINE AND JIM WOLFENSOHN GIFT 1888 MELBOURNE CUP

17 July – 21 September

Collection of the National Gallery of Australia



THE BALNAVES GIFT

2 October - 21 November 2015

In mid-2010 Neil Balnaves AO made the extremely generous pledge to donate paintings from his personal art collection to the Mosman Art Gallery and municipality. This was realized in 2012 through a donation of 16 Australian Impressionist and early twentieth century artworks significant to the Mosman area. *The Balnaves Gift* includes key works by several of Australia's most distinguished artists; Arthur Streeton, Conrad Martens, Will Ashton, Henry Fullwood, Elioth Gruner, George Halstead, James Ranalph Jackson, Matthew Charles



Meere, Adelaide Elizabeth Perry, Sydney Long, Ethel Carrick Fox and Margaret Preston. These works are being loaned to Goulburn and will be exhibited with complementary works from the goulburn.art REGIONAL GALLERY collection.

These works are kindly on loan from Mosman Art Gallery.

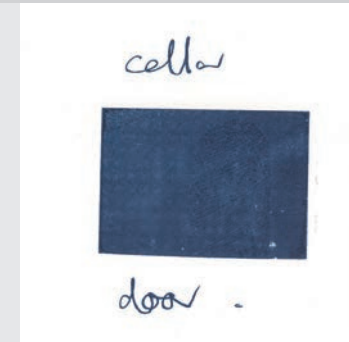
Image: Ethel CARRICK FOX (1872 – 1952) *On Balmoral Beach, Sydney*, 1913 Oil on canvas on board 26 x 34cm, Courtesy Mosman Art Gallery, The Balnaves Gift

2014 GOULBURN ART AWARD WINNER EXHIBITION
Nicola Milson

28 August - 26 September 2015

Nicola Milson's photograph *Out of Time* was chosen by the judge, Danie Mellor, to receive last year's award. At the age of 18 and while in her final year at school, her 'beauty and the beast' subject was inspired by a poem by Kenneth Slessor. This exhibition will reveal a new body of photographic works by Nicola.

Image: Nicola Milson *Out of time*, 2014, Photograph, 65 x 58cm. Winner 2014 Goulburn Art Award



DEADPAN

2 October - 21 November 2015
 CURATED BY ABIGAIL MONCRIEFF

Deadpan is an exhibition that features Australian and international artists brought together by their use of humour in contemporary practice. Pranks, stunts, satire, one-liners, these artists' use comedic strategies to articulate the human condition and the figure of the artist.

Included works are presented across multiple disciplines and will include five new, commissioned works by Australian artists that will be developed and performed in Goulburn. Establishing a dialogue between the popular format of television sketch comedy and the conceptual acts of artists, these new works will take their cue from the popular variety TV format and will be performed and screened throughout the duration of the exhibition.

Image: Mitch Cairns, *Cellar Door*, 2012, Dip or Skinny Dip (Plate XLII), riso print on paper, 18.00 x 15.00 cm. Image courtesy the artist and The Commercial Gallery, Sydney

This project was supported through a Curator in Residence grant. The Curator in Residence Grant Program is supported by the Copyright Agency Limited's Cultural Fund, and is managed by Museums & Galleries of NSW.