



McLean Edwards, Blue Cowboy, 2010
Oil on Canvas 183 x 153

GRAG
PROGRAM
July - December 2010

GOULBURN REGIONAL ART GALLERY

Until - 11 July



An Art Gallery of NSW exhibition toured by Museums and Galleries NSW

Exhibition will also be open Sundays & Public Holidays 1 – 4pm



Sam Leach, *Tim Minchin*, oil & resin on wood,
Archibald Prize winner, 2010
Image courtesy Art Gallery of New South Wales

15 July – 21 August

two six two two

Surya Bajracharya • Olivia Bernardoff
Phil Day • Julian Laffan • Cathy Peake
Bruce Radke • Kate Stevens •
Jonathon Throsby • John R Walker

Braidwood, on the Southern Tablelands of NSW, is home to many visual and creative artists. This exhibition curated by Cecile Galiazzo showcases recent works of 9 established and emerging artists.

Saturday 17 July Opening @ 2pm

Guest speaker Robin Wallace-Crabbe

Thursday 22 July Floor Talk @ 12.30pm

by Cecile Galiazzo, Curator



Olivia Bernardoff, *Adaptation*, 2010 Acrylic on canvas
90 x 70 cm

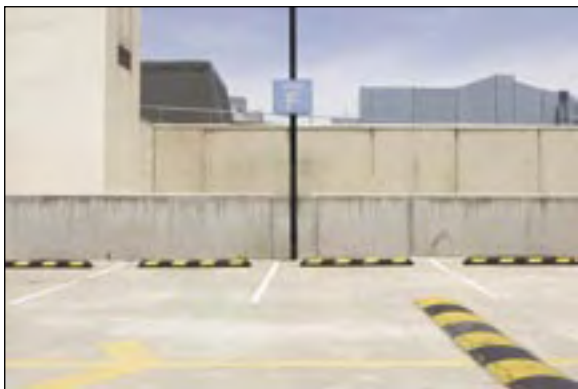
15 July – 21 August

JORDAN STOKES

Space in Space 2

“I find a real tangible beauty in places which are thought to have none - refuse land, industrial estates and vast suburban sprawl. The edges decreed by the picture frame afford me a tool to explore environments with a deliberate eye. I try to work with the elements of a place within these compositional structures. However, what's chosen to be left out of my pictures speaks a similar volume.”

Saturday 17 July Opening @ 2pm



Jordan Stokes, *East Gardens*
2010 Digital photographic print

25 August - 2 October

McLean Edwards

Bad Habits

"Many art lovers will recognise McLean Edward's unique personal style. His paintings are populated with a cast of characters that seem cartoon-like in their effortless execution. But Edwards is an artist of the old school, where craft counts as much as content."
Andrew Frost, Metro art, June 2010.

Saturday 28 August Opening @ 2pm

by curator, Andrew Frost and McLean Edwards

Thursday 2 September Floortalk @12.30 pm

by McLean Edwards



McLean Edwards, Red Pot Twirler, 2010, Oil on Canvas 183 x 153cm

25 August - 2 October

A-F FULGENCE - Space 2 **Landscapes and Hunting** **Dogs**

Emigrating from France in 1989, artist Anne-France Fulgence (AF) is well known for her confronting series of portraits of the pig hunting dogs of Australia. "While it is fun to challenge the viewer with large-scale dog faces (and even more exciting to paint it) it is also great to be able to paint other subjects." She has recently been drawn to expressing the landscape that surrounds her studio and home in the spectacular Kangaroo Valley.

Saturday 28 August Opening @ 2pm

Saturday 11 September, 1 – 4pm

Masterclass with A-F Fulgence



A-F Fulgence, *Jamberoo Pass Road*, 2010 Oil on canvas
40 x 40cm

9 October - 20 November

GW BOT: The Long Paddock.

A 30 year survey

This exhibition looks at the work of G.W. Bot spanning the period from 1981 to 2010. Its selective character highlights this significant Australian artist's diverse and rich practice and includes paintings, prints, drawings, artist books and sculpture.

The long paddock confirms G.W.Bot as an artist in consummate control of her chosen means and an artist willing and ready to continue to step in new directions.

Saturday 9 October Opening @ 2pm

by Stuart Purves AM, Director, Australian Galleries

Thursday 14 October @ 12.30pm

Floor talk by Peter Haynes, Director, ACT Museums and Galleries

Saturday 6 November, 1- 4pm

Masterclass with GW Bot
Bookings essential 4823 4494



Australian Government
Visions of Australia



GORDON DARLING FOUNDATION



G W Bot, *Resurrection Glyphs-Midday*, 2009 Linocut on Korean Hanji paper 62 x 94cm

24 November - 4 December

GABRIELLE JONES

Paint as Landscape

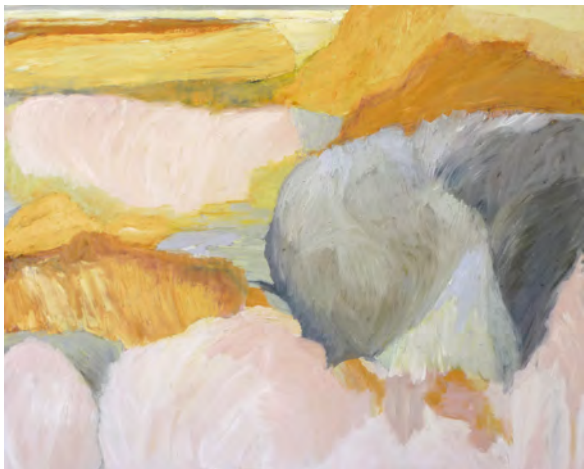
“My work is embedded in Nature, but my paramount concern is with paint - the processes by which it has an ability to elicit the sense of air, light and energy of movement through the Australian Landscape, whilst transferring the emotional and visceral qualities of this environment to the canvas. As a city dweller, most of my contact with nature is from within the car and through the lens of my camera - and the works reflect this.”

Saturday 27 November Opening @ 2pm

Saturday 4 December, 1- 4pm

Masterclass with artist Gabrielle Jones

Bookings essential 4823 4494



Gabrielle Jones, *Dry Bounty*, 2010 Oil on Canvas
122cm x 152cm

24 November - 4 December

Goulburn Region HSC Body of Work 2-0-1-0

Each year GRAG presents a selection of HSC artworks from regional students highlighting the wide scope of visual arts works being created in the region. This annual fixture is GRAG's commitment to providing a professional exhibiting space for regional high school students.

Thursday 25 November Opening @ 6pm
by Mayor of Goulburn Mulwaree Council



Sara Dykgraaf, *Crossing Boundaries*, 2009
Photomedia on foam core 1 of 3, each 125 x 79cm
Trinity Catholic College Goulburn

8 – 22 December

JAPANESE STORY

Exhibition of works by artists who have been influenced by Japanese culture: Kaye Faulkner, Lois Johnson & Nicola Moss and including Astro Boy paraphernalia from Fiona Hammond's collection.

Saturday 11 December Opening @ 2pm



Nicola Moss, *The air we breathe, the water we drink*
2010 Acrylic on canvas 152 x 122cm
Photograph: Carl Warner

8 – 22 December

TINA MILSON

Winner 2D section 2009 Art Award

FIONA HAMMOND

Joint Winner 3D section 2009 Art Award

GAYLE STOCKLEY

Joint Winner 3D section 2009 Art Award

Saturday 11 December Opening @ 2pm

by Anne Fulwood, Trustee of the Art
Gallery of New South Wales



Gayle Stockley, *Outlines*
2010 Relief sculpture made
using sticks blackened by
bush fire 147 x 75 cm



Fiona Hammond, *Nature's Treasures*, detail, 2009
Bead-embellished neckpiece



Tina Milson, *Chain of help*, 2009 Photography

8 – 22 December

GRAG PERMANENT COLLECTION ... a glimpse

It's time for the annual showing of a selection of GRAG's permanent collection. Each year, a new display is chosen to represent our eclectic collection of works which have a connection to the Goulburn region through the artist, the subject matter or through previous owners. There'll be something for everyone, so come in and take a glimpse.

Saturday 11 December Opening @ 2pm



Dimity Kidston, *Banksia medley*, 2009 Tapestry
120 x 120cm

3 December

VISIONS OF PLEASURE 4

Exhibition of works created in weekly workshops at the Gallery by Essential Personnel participants working with artists Eva Froncek, Elaine Cornwell & Angela Donges.

International Day of Disability

Opening Friday 3 December at 2pm
at the Goulburn Workers Club





Neil, *Untitled*, 2010 mixed media

GRAG Public Programs July - December 2010 Floor Talks/Forums/Events:

Thursday 22 July @ 12.30pm

Two six two two

Floor Talk by Cecile Galiazzo, Curator

Thursday 2 September @12.30 pm

The Fluid Economy of Gorgosity Made Flesh

Floor talk by Adam Cullen

Saturday 11 September, 1– 4pm

Masterclass with A-F Fulgence

Thursday 14 October @12.30 pm

Floor Talk by Peter Haynes, Director, ACT
Museums and Galleries

Saturday 6 November, 1-4pm

Masterclass with GW Bot

Saturday 4 December, 1-4pm

Masterclass with Gabrielle Jones

WORKSHOPS

School Holiday and After School Art Classes are conducted on a regular basis for children aged 4 – 18 by visiting Regional artists and craftspeople in a variety of disciplines. For further information contact Gallery on 48 234 442.

CREATIVE EDUCATION

GRAG offers creative and skills based education programs for pre-school, primary and secondary school students, including home schooled students and TAFE. These are designed to give students opportunities for artistic expression and learning experiences which relate to the school syllabus. They compliment exhibitions in the Gallery.

Teachers are also invited to take part in professional development days. GRAG also offers an outreach program for rural and isolated schools and weekly workshops for people with disabilities.

Teachers' information and program outline

All pre-school, primary, secondary and TAFE teachers are invited to preview our 2010 program at the beginning of each semester. The previews will include information about our upcoming exhibitions and public programs. We welcome all Visual Arts, Industrial Arts, English, History, ESL, primary and teachers interested in the arts in general to attend these informative get togethers. Our education officer will give an outline of what the gallery can offer your school, or TAFE in the way of tailored floor talks for your group and inform you about the educational resources that the Goulburn Regional Art Gallery can offer you as a teacher. In addition, all pre-schools, schools and TAFES are welcome at any time during an exhibition and can request a floor talk prior to their visit.

Teacher information evening will be held on Thursday 29 July RSVP essential P: 48234442

FRIENDS OF THE GALLERY

Being a Friend is a great way to stay in touch with what is happening in the art world; meet new like minded friends and share your skills and expertise or learn new skills and expertise. As a member you will receive quarterly newsletters, a 10% discount in our Gallery Shop and to all paid events held at the gallery. Membership is \$20 per year.

VOLUNTEERS

GRAG welcomes Volunteers to assist with general administrative duties, guiding visitors, opening events etc. OH & S Training is provided. Please telephone the Gallery on 48 234494 or call in and see us.

GALLERY SHOP

The Gallery shop stocks a variety of cards and beautiful objects by regional artists. For special gifts we have handcrafted jewellery, ceramics and books.

RESOURCE LIBRARY

Goulburn Regional Art Gallery is an educational resource for the whole community. Consult our collection of books, magazines, reviews, biographies about practising artists, invitations and catalogues on specific artists, artworks and exhibitions you are interested in.

GRAG is looking for the support of far sighted businesses, individuals and companies in the Region.

To find out how you can support YOUR regional gallery, please contact Jane Cush on 48 234 443 or email artgallery@goulburn.nsw.gov.au. All donations will be acknowledged at your discretion.

C=onnection=s

Goulburn Regional Art Gallery is pleased to work alongside the following organisations:

Accessible Arts

Ageing Disability & Home Care (ADHC)

Australian Blues Music Festival

Australian Hot Rod Nationals

Bourke Street Primary School

CWA, Exeter & Breast Cancer Awareness

Crescent School

Crookwell Art Society

Essential Personnel weekly workshops

Goulburn & Berrima Correctional Centres

Goulburn Catholic Care

Goulburn Historic Waterworks Museum

Goulburn Multicultural Festival 2010

Goulburn Multicultural Group (GMC)

Goulburn Mulwaree Council

Goulburn Regional Conservatorium

IMB Community Foundation

Kenmore Hospital Museum

Lieder Theatre

Mulwaree Arts

Mulwaree High School

Regional primary & high schools

SDN Children's Services
Inc Lady McKell Child & Family Learning Centre

Soroptimist Club

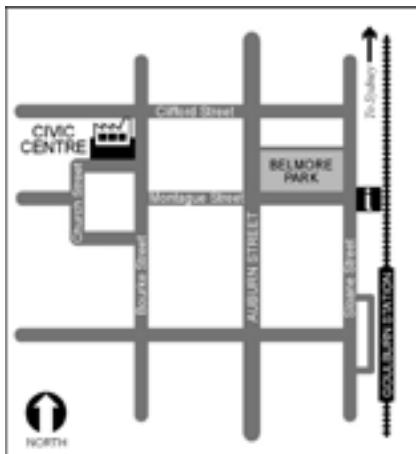
Southern Tablelands Early Learning & Support
Program weekly workshops

STARTS-Southern Tableland Arts

TAFE NSW - Illawarra Institute (Moss Vale &
Goulburn campus')

U3A





**GR
AG**
GOULBURN REGIONAL
ART GALLERY

Goulburn Civic Centre
Cnr Bourke & Church Sts Goulburn
Open: Mon-Fri 10 – 5 Sat 1- 4
Closed Public Holidays
Ph: 02 4823 4494
Email: artgallery@goulburn.nsw.gov.au
www.goulburn.nsw.gov.au

FREE ENTRY



Goulburn Regional Art Gallery is supported by Goulburn Mulwaree Council and assisted by the NSW Government through Arts NSW