

Australian Still Life

Not just another bowl of flowers

Goulburn Regional Art Gallery

12 December 2012 – 19 January 2013

Still Life, Landscape and Portrait are terms which characterise art works by their subject.

A Still Life work depicts an object or group of objects, usually indoors and of manageable sizes. Traditionally, artists painted vases of flowers, bowls of fruit and vegetables or mixed arrangements which could also include dead game animals or precious or curious objects.

Landscapes are pictures of outdoor scenery which may include waterways and buildings.

Portraits depict the face or full length of living people. A portrait can be of a single person or a group of people and can also be of living animals, usually a pet or prized stud animal.

As the title implies, all the works in this exhibition are in the still life category. Some portray traditional subjects such as a vase of flowers or a table setting, others such as Jude Rae's paintings are of a mixture of industrial containers and domestic objects.

LINE and SHAPE



Pam Tippett *Eggs* 2001-4 graphite on paper 26.5x33cm

1. Pam Tippett is the artist who created this drawing. By reading the wall label, you will notice that she has used only graphite (pencil).

There are natural and man-made shapes in this drawing but they are all rounded.

Examine the lines of the drawing. How has the artist created these rounded shapes and the impression of a reflective surface on the bowl?

2. Robyn Stacey is a photographer who created the work *Bombe (Cape Bulbs)* 2009, Type C print on paper, a flamboyant arrangement of flowers in a vase. There are several other works in this exhibition which include fresh flowers. What advantage would Robyn Stacey have in creating her work over the artists who have used paint?

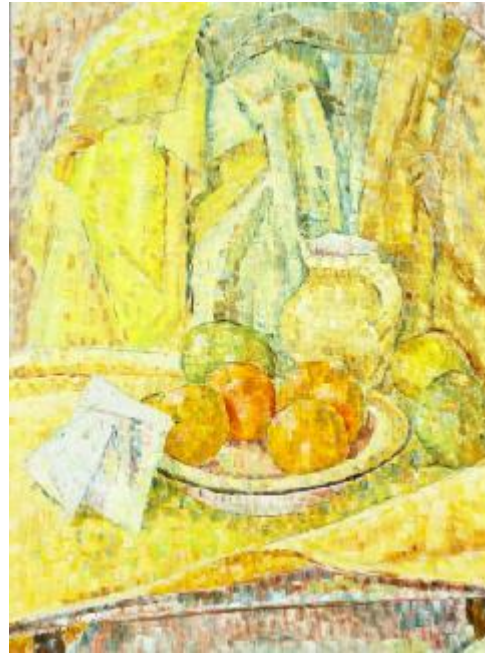
3. A small number of artists are represented in this exhibition by two paintings. Is it obvious that both works are by the same artist and if so, what elements are the same

or different? Read the label for this and find out when the artist created each work – has their style or materials changed?

4. As mentioned above, dead game animals (used as food) were often depicted in still life paintings. One work in this exhibition depicts a very traditional game 'animal' but another portrays a more unusual one. Give the artist, title and name the creatures in these two works.

5. a) The artist Grace Cossington Smith is known as one of Australia's first modernist painters. Look carefully at her work and describe the elements which relate to a traditional style of painting.

5. b) An abstract art work is one which does not depict its subject realistically, often to the point at which the object becomes unrecognisable. You could perhaps describe this work as being semi-abstract. Look at the way Cossington Smith has used colour to explain this.



Grace Cossington Smith *Still life with oranges on a plate* 1960 oil on composition board 65.9 x 49.4 cm
Mary Turner Collection, Orange Regional Gallery.

6. Choose your favourite work in the exhibition and using just a pencil, sketch it below. You can also set up your own still life to draw with anything you can find at home.

